

Telephone and Switchboard Cables

Telephone and Switchboard Cables



SIYARO[®]
JEEVAN RAKSHAK **CABLES**

Telephone & Switchboard Cables

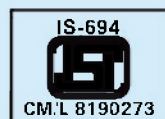
Siyaro is one of the leading cable manufacturers having the state of the art fully automated manufacturing plant in trill mill industrial N.Dehli.

The bright annealed solid bare copper conductor is insulated with specially formulated high density polyethylene in various colours. The insulated core are twisted with uniform lay to form pairs and are bunched together in such a way to minimize cross talk. The laid up cables are taped with polyester and overall jacketed with specially formulated in house grey colour. FR PVC compound with high temperature and oxygen index. These cables are best suited for switchboard and internal telephone wiring in hotels, Hospitals, I.T. Industries, factories, multistoried building, residential complex, etc. The cables generally conform to TEC/BSNL specifications.

Construction Details	Conductor Size : 0.4 mm	Conductor Size : 0.5 mm
Conductor	Solid annealed bare copper	Solid annealed bare copper
Insulation Material	High density polyethylene	High density polyethylene
Insulation Thickness	Average 0.20 mm	Average 0.20 mm
Diameter of Insulated conductor	Maximum 0.82 mm	Maximum 0.92 mm
Rip Cord	Nylon	Nylon
Jacked	FR PVC	FR PVC
Approx. Outer diameter	Conductor Size : 0.4 mm	Conductor Size : 0.5 mm
1 Pair	2.10 mm	2.75 mm
2 Pair	3.10 mm	3.50 mm
3 Pair	3.30 mm	4.00 mm
4 Pair	3.70 mm	4.70 mm
5 Pair	4.00 mm	5.50 mm

Colour Combination	Pair 1	Pair 2	Pair 3	Pair 4	Pair 5
Pair 1	White - Blue	-	-	-	-
Pair 2	White - Blue	White - Orange	-	-	-
Pair 3	White - Blue	White - Orange	White - Green	-	-
Pair 4	White - Blue	White - Orange	White - Green	White - Brown	-
Pair 5	White - Blue	White - Orange	White - Green	White - Brown	White - Gray

Electrical Parameters	Conductor : 0.4 mm	Conductor : 0.5 mm
Conductor Resistance (Max.)	143 ohms/Km at 20°C	92.20 ohms/Km at 20°C
Mutual Capacitance (Max.)	50nF/Km	50 nF/Km
Insulation Resistance (Max.)	10000M-ohms/Km	10000M-ohms/Km
Capacitance Unbalance Pair to Pair (Max.)	250pF/Km	250pF/Km



SIYARO[®]
JEEVAN RAKSHAK CABLES



MFG. BY :
NEELAM ELECTRICALS
3, (New No.7) krishna Iyer Street,
(Facing Govindappa Naicken street)Parrys.Chennai-600 079