

# SIYARO<sup>®</sup>

JEEVAN RAKSHAK CABLES



- ✓ 3 Core Flat
- ✓ Round Submersible Cables
- ✓ PVC Winding Wires



For working voltage upto & Including 1100 volts - as per IS : 694 - 1990 and BS : 6004 - 1990

## 3 Core Flat Cables For Submersible Pump Motors

Siyaro Submersible cables perform under rough and tough field conditions. In house PVC Compounds are formulated to meet the demanding operating conditions. The cores are laid up in Flat parallel mode and outer sheathed using PVC hard grade compound that are highly resistant to abrasion, water and oil.

The 3 cores will be of colour Red, Yellow and Blue.



Conductor		Insulation	Sheath		Conductor Resistance @ 20°C (Max.) Ohms/Km	Current Carrying Capacity @ 40°C Amps
Area (Nom.) Sq. mm	No./dia of strands No./mm	Thickness (Nom.) mm	Thickness (Nom.) mm	Overall dimension (Approx.)(WxT) mm		
1.5	22/0.3	0.6	0.9	11.0 x 5.0	12.1	16
2.5	36/0.3	0.7	1.0	13.0 x 6.0	7.41	22
4.0	56/0.3	0.8	1.0	15.3 x 6.7	4.05	29

### 3 Core Flat Cables (Generally conforming to IS : 694)

Conductor		Insulation	Sheath		Conductor Resistance @ 20°C (Max.) Ohms/Km	Current Carrying Capacity @ 40°C Amps
Area (Nom.) Sq. mm	No./dia of strands No./mm	Thickness (Nom.) mm	Thickness (Nom.) mm	Overall dimension (Approx.)(WxT) mm		
6	84/0.3	1.0	1.15	18.6 x 8.0	3.30	37
10	80/0.4	1.0	1.4	23.4 x 10.0	1.91	51
16	126/0.4	1.0	1.4	28.0 x 11.4	1.21	68
25	196/0.4	1.2	2.0	35.4 x 14.8	0.780	86
35	276/0.4	1.2	2.0	39.5 x 16.3	0.554	110
50	396/0.4	1.4	2.2	45.5 x 18.5	0.386	145

Note : 3 Core x 70 sq.mm & 3 core x 95 sq.mm Flat cables are available on request.

### Special (as per IS : 694)

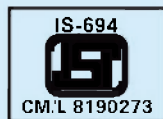
Conductor		Insulation	Sheath		Conductor Resistance @ 20°C (Max.) Ohms/Km	Current Carrying Capacity @ 40°C Amps
Area (Nom.) Sq. mm	No./dia of strands No./mm	Thickness (Nom.) mm	Thickness (Nom.) mm	Overall dimension (Approx.)(WxT) mm		
1.5	22/0.3	0.8	1.1	11.4 x 5.3	12.1	16
2.5	36/0.3	0.9	1.2	13.0 x 6.2	7.41	22
4.0	56/0.3	1.0	1.2	15.8 x 6.7	4.95	29

Note : Insulation thickness, Sheath thickness and Overall Dimensions given in the nominal values. The strand diameter is nominal. However, construction of the conductor is designed to satisfy the requirement of conductor resistance as per IS 8130 : 1984

### Selection Guide For 3 Core Flat Cables

1) HP Vs Current : The full load current for submersible pump motors, 3 phase, 50 cycle, 415 - 425V.

HP	5.0	7.5	10.0	12.5	14.5	17.5	20.0	25.0	30.0	35.0	40.0	45.0	50.0	55.0	60.0	65.0	70.0	75.0	80.0	Ambient Temperature C					
Amp	7.5	11.0	14.9	18.9	22.5	25.2	28.4	35.6	42.3	50.4	58.1	62.1	67.5	73.8	81.0	87.3	93.6	100.0	108.0	Rating Factor					
																					30	35	40	45	50
																					1.09	1.04	1.00	0.95	0.88



**SIYARO**<sup>®</sup>  
**JEEVAN RAKSHAK CABLES**



MFG. BY :

**NEELAM ELECTRICALS**

# 3, (New No.7) Krishna Iyer Street,

(Facing Govindappa Naicken street) Paryys.Chennai-600 079